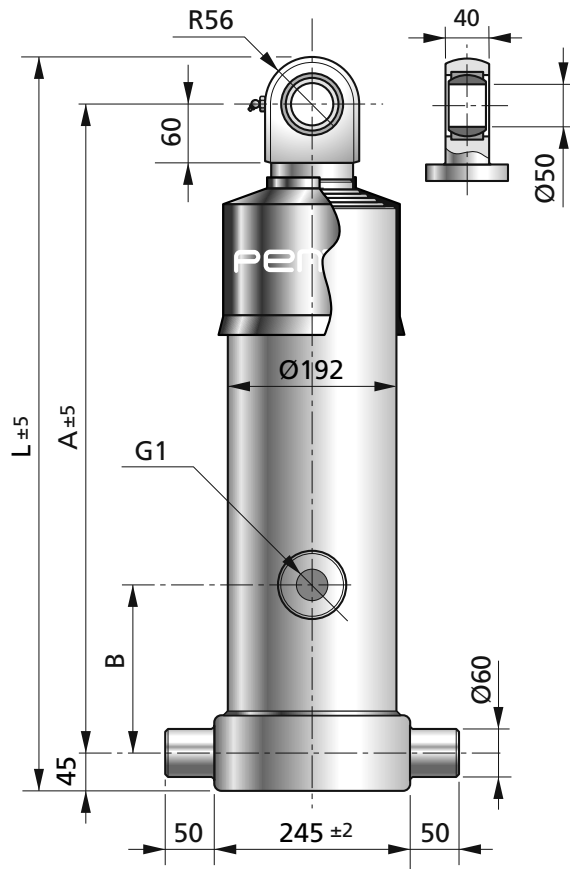


PINS TO EYE

HF 169

EFFECTIVE DIAMETER [mm] **169 - 149 - 129 - 111 - 95**

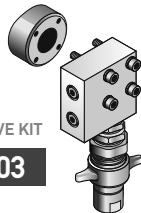


OPTIONAL

OIL PORT FOR DESCENT CONTROL VALVE

DESCENT CONTROL VALVE KIT

JD0003

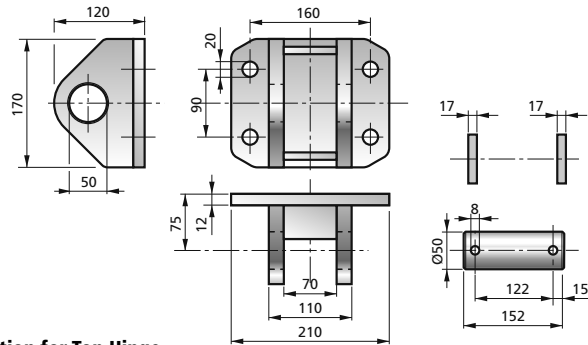


ACCESSORIES



TOP HINGE

A40050013



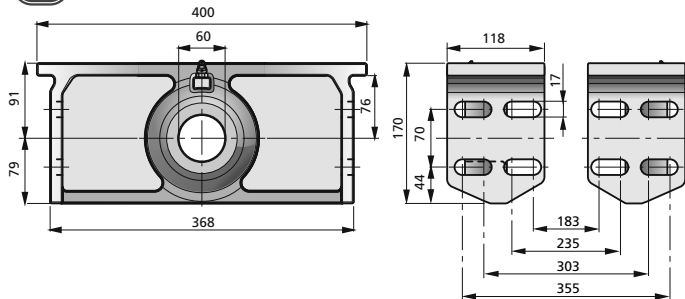
Caution for Top Hinge

It is recommended the fitment of two spacers ensuring the top bearing to be centered on the support and to swivel properly (+/-7°). These spacers are included.



BOTTOM BRACKET • PAIR

A90060003



Caution for Upper and Bottom Brackets

Recommended backlash between pin over-bosses and brackets / supports = 3 mm total (1.5 mm each side). It is recommended to fit M16 bolts/nuts, type 8.8 or better.



Pull-out

Dimension marked as **A** (closed centre dimension) refers to cylinder completely closed. It is recommended to fit the cylinder with 20-25 mm pull-out more than the specified **A** dimension, in order to avoid unwanted loads on internal steel stop rings when tipper body is fully loaded.



Chromium Plate

All front mount Penta cylinders have the piston rod hard chrome plated, to ensure better resistance to corrosion and longer lifetime to the seals (the seal set of the piston rod is the most critical, as when the truck is in motion the tipping body can vibrate). Penta do not guarantee standard cylinders against corrosion.

HF 169 TECHNICAL DATA

MODEL	CODE	EXTENSIONS N.	POWER STROKE [mm]	MASS [kg]	WORKING VOLUME [dm ³]	MAX. WORKING PRESSURE [bar]	TIPPING CAPACITY [ton]	L	A [mm]	B
HF 4330 169 4	4112801694010	4	4330	193	67,6	200	46-85	1459	1358	190
HF 4630 169 4	4113601694010	4	4630	205	72,3	200	46-85	1534	1433	190
HF 4930 169 4	4114301694010	4	4930	214	77	200	46-85	1609	1508	190
HF 5090 169 4	4114701694010	4	5090	217	79,5	200	46-85	1649	1548	400
HF 5690 169 4	4116801694010	4	5690	246	88,9	200	46-85	1859	1758	400
HF 5420 169 5	4112801695010	5	5420	204	75,4	200	39-73	1470	1369	400
HF 5800 169 5	4113601695010	5	5800	215	80,6	200	39-73	1545	1444	400
HF 6170 169 5	4114301695010	5	6170	226	85,8	200	39-73	1620	1519	400
HF 6720 169 5	4116001695010	5	6720	250	93,5	175	39-64	1790	1689	400
HF 7120 169 5	4116801695010	5	7120	265	99,1	150	39-55	1870	1769	400
HF 7720 169 5	4118001695010	5	7720	280	107,4	130	34-48	1990	1889	400