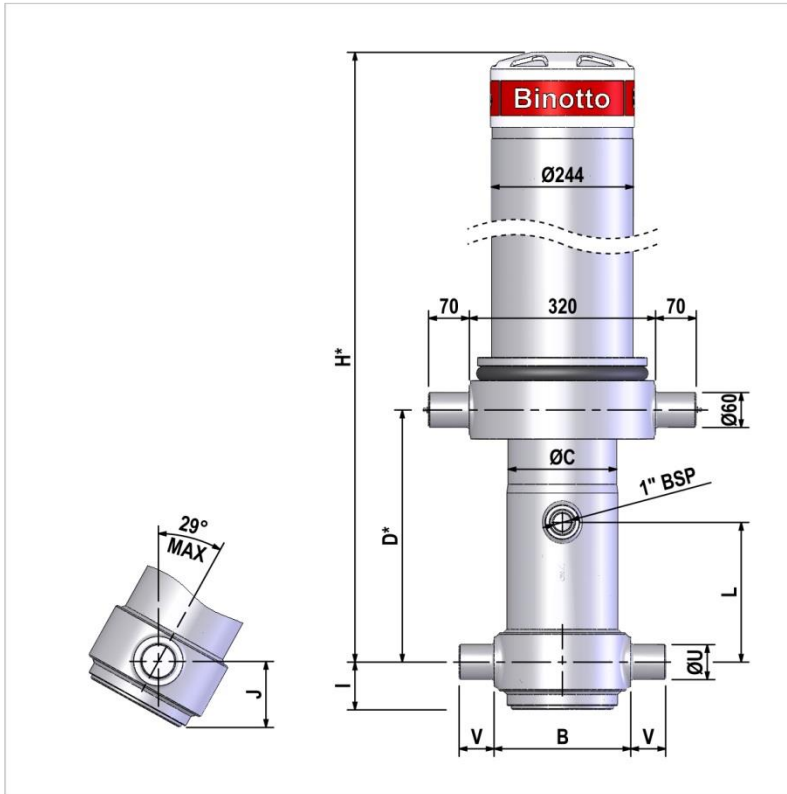




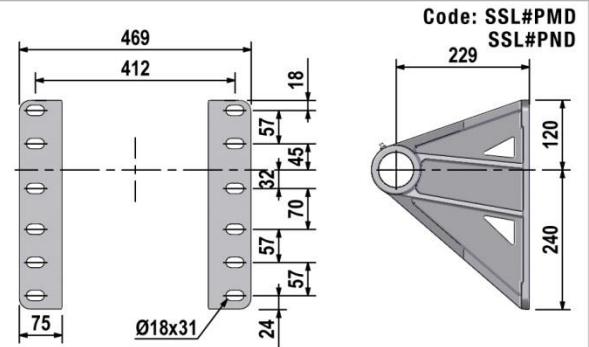
SINGLE ACTING FRONT END CYLINDER

MFC_B3 (165 series)

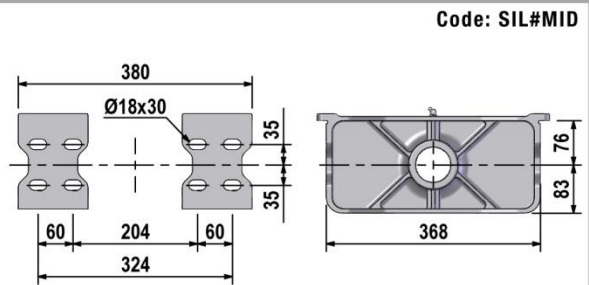
International Catalogue • Rev 01.2017 • Subject to change without notice



Upper Brackets Dimensions and Chassis Drilling Template



Lower Brackets Dimensions and Chassis Drilling Template



DESCRIPTION	STAGES	STROKE [mm]	B [mm]	ØC [mm]	D* [mm]	H* [mm]	I [mm]	J [mm]	L [mm]	U [mm]	V [mm]	VOL [L]	WEIGHT [kg]
MFC_B3 165/4/4110	4	4110	235	187	343	1347	82	116	250	60	60	61	309
MFC_B3 165/4/4510	4	4510	235	187	343	1447	82	116	250	60	60	66,9	327
MFC_B3 165/4/4710	4	4710	235	187	343	1497	82	116	250	60	60	69,9	335
MFC_B3 165/4/4910	4	4910	235	187	343	1547	82	116	250	60	60	72,8	344
MFC_B3 165/4/5110	4	5110	235	187	343	1597	82	116	250	60	60	75,8	353
MFC_B3 165/4/5310	4	5310	235	187	343	1647	82	116	250	60	60	78,8	362
MFC_B3 165/4/5865	4	5865	235	187	343	1797	82	116	250	60	60	87	389
MFC_B3 165/5/5135	5	5135	235	187	343	1351	82	116	250	60	60	67,2	312
MFC_B3 165/5/5385	5	5385	235	187	343	1401	82	116	250	60	60	70,5	320
MFC_B3 165/5/5635	5	5635	235	187	343	1451	82	116	250	60	60	73,7	328
MFC_B3 165/5/6135	5	6135	235	187	343	1551	82	116	250	60	60	80,3	346
MFC_B3 165/5/6385	5	6385	235	187	343	1601	82	116	250	60	60	83,5	355
MFC_B3 165/5/6825	5	6825	235	187	343	1701	82	116	250	60	60	89,3	373
MFC_B3 165/5/7075	5	7075	235	187	343	1751	82	116	250	60	60	92,6	381
MFC_B3 165/5/7325	5	7325	235	187	343	1801	82	116	250	60	60	95,8	390
MFC_B3 165/5/7575	5	7575	235	187	343	1851	82	116	250	60	60	99,1	401
MFC_B3 165/5/7825	5	7825	235	187	343	1901	82	116	250	60	60	102,4	410
MFC_B3 165/5/8185	5	8185	235	187	343	2001	82	116	250	60	60	107,1	430
MFC_B3 165/5/8435	5	8435	235	187	343	2051	82	116	250	60	60	110,4	442

The application of a telescopic cylinder is to lift up tipping bodies, loaded with different materials, in order to discharge this material during its extension. • This cylinder is designed as a lifting device only for loads along the longitudinal axis. • It must not be used as a structural member or be subject to side load. • Hydraulic oil temperature allowable range between -40°C and +80°C. • Chromed thickness: minimum 20 µm • For standard version, max. duration of extension is 2 hrs. • Cylinder is painted gray (RAL 7021) with a thickness conforming to the 480 hours neutral salt spray test as per ISO 9227 (ISO 10289, rating 9). • The max tipping weight that can be raised by the cylinder is the body weight plus the max payload. This value, calculated at the max pressure, is a rough indication of the tipping power of the cylinder and must be used as a first criteria for the selection of the cylinder. • The real tipping mass can only be calculated by the design engineer of the dump truck, and must take into account the geometry of the dump body and operating conditions. • Never exceed maximum cylinder load. • Never exceed maximum pressure. • Maximum working pressure 200 bar. • For Pump flow selection, contact the Binotto Technical Department. • Weights shown include brackets. • Keep always 1 mm clearance between lower brackets and cylinder to avoid friction. • Shorter outer covers are also available: if different D dimension is required, please contact Binotto Technical Department.

*Including 20 mm pull-out

The cylinder must always be sold together with Quick Instructions (QI) and User Manual (MU). Make sure they are included and check them carefully before installation, usage, service or repair.